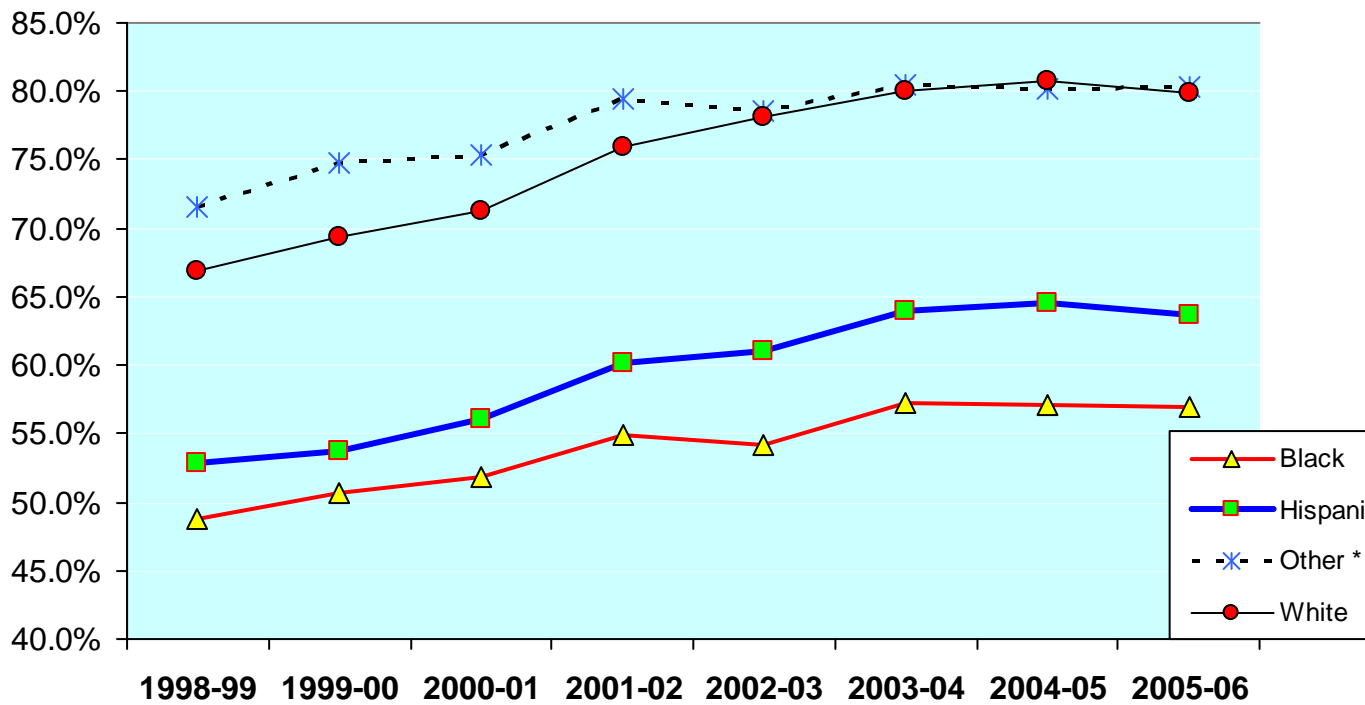


2006 Florida Graduation and Dropout Rates

Tables and Charts

Florida High School Graduation Rates by Race, 1998-1999 to 2005-2006

	White	Black	Hispanic	Asian	Am. Indian	Multi- racial	Total
1998-99	66.9%	48.7%	52.8%	73.4%	61.7%	64.7%	60.2%
1999-00	69.4%	50.6%	53.7%	77.4%	65.1%	64.8%	62.3%
2000-01	71.2%	51.9%	56.0%	77.5%	68.8%	68.4%	63.8%
2001-02	75.9%	54.9%	60.1%	82.0%	70.0%	74.1%	67.9%
2002-03	78.1%	54.2%	61.1%	81.0%	72.1%	73.8%	69.0%
2003-04	80.1%	57.3%	64.0%	82.3%	73.2%	78.1%	71.6%
2004-05	80.8%	57.1%	64.5%	82.2%	73.3%	77.7%	71.9%
2005-06	79.9%	56.9%	63.7%	83.2%	75.7%	75.9%	71.0%

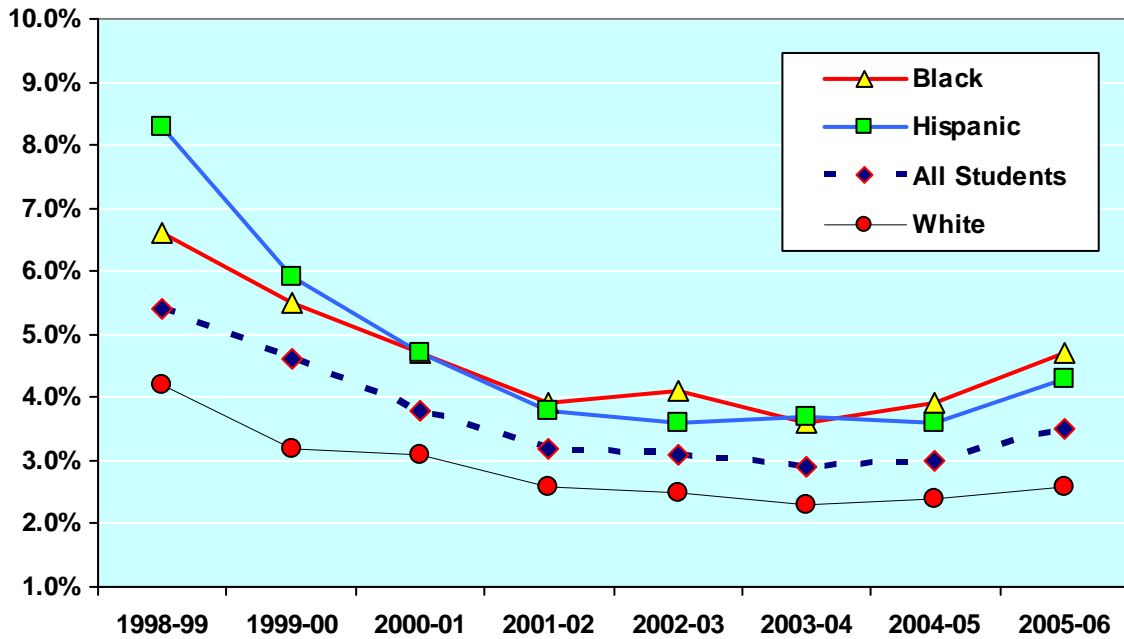


The following chart and table show Florida's annual high school dropout rates by race/ethnicity from 1998-1999 through 2005-2006.

Florida High School Dropout Rates by Race

Ethnic Group	1998-99	1999-00	2000-01	2001-02	2002-03	2003-04	2004-05	2005-06
Am. Indian	4.8	3.7	3.1	2.5	2.8	2.9	2.9	3.1
Asian	2.8	2.2	2.1	1.7	1.8	1.6	1.5	1.5
Black	6.6	5.5	4.7	3.9	4.1	3.6	3.9	4.7
Hispanic	8.3	5.9	4.7	3.8	3.6	3.7	3.6	4.3
Multiracial	4.2	3.7	3.0	2.2	2.2	2.2	2.0	2.6
White	4.2	3.2	3.1	2.6	2.5	2.3	2.4	2.6
Total	5.4	4.6	3.8	3.2	3.1	2.9	3.0	3.5

Dropout Rate Trends for the Largest Ethnic Groups



The following tables show graduation and dropout rates for Florida's school districts from 1998-1999 through 2005-2006.

Florida Public High School Graduation Rates by District

	1998-99	1999-00	2000-01	2001-02	2002-03	2003-04	2004-05	2005-06
ALACHUA	63.3%	63.7%	61.2%	66.4%	67.5%	68.8%	69.6%	69.8%
BAKER	55.7%	54.3%	55.1%	60.8%	67.3%	68.2%	72.2%	73.1%
BAY	55.9%	65.9%	68.3%	70.3%	76.6%	75.4%	78.1%	77.5%
BRADFORD	60.4%	67.4%	70.8%	75.2%	74.7%	70.5%	76.1%	69.5%
BREVARD	64.0%	80.4%	86.8%	88.5%	88.4%	91.7%	91.5%	90.7%
BROWARD	53.5%	63.9%	62.3%	65.2%	62.7%	66.2%	67.1%	67.8%
CALHOUN	83.5%	90.4%	86.8%	86.8%	87.8%	90.5%	94.3%	89.6%
CHARLOTTE	68.4%	71.7%	74.7%	75.8%	68.0%	80.3%	76.7%	78.0%
CITRUS	70.8%	72.3%	73.6%	71.2%	75.3%	76.9%	73.3%	73.2%
CLAY	65.3%	65.9%	67.3%	70.9%	75.4%	73.8%	75.1%	73.8%
COLLIER	63.0%	63.3%	64.5%	68.2%	67.6%	72.5%	74.3%	74.7%
COLUMBIA	63.6%	61.8%	59.5%	68.1%	73.1%	75.6%	74.7%	67.4%
DADE	53.2%	52.2%	53.9%	55.7%	57.9%	60.6%	59.9%	59.2%
DESOTO	62.7%	67.5%	64.8%	69.7%	66.2%	66.3%	63.5%	70.0%
DIXIE	60.5%	71.2%	73.8%	75.1%	63.8%	72.8%	66.5%	70.4%
DUVAL	58.7%	57.4%	55.9%	61.0%	63.7%	67.2%	65.5%	60.5%
ESCAMBIA	62.6%	65.2%	65.2%	69.9%	64.9%	71.3%	73.2%	74.8%
FLAGLER	63.5%	64.4%	67.4%	72.2%	81.3%	79.4%	79.7%	78.4%
FRANKLIN	71.2%	63.2%	65.8%	57.9%	72.8%	71.1%	80.0%	60.7%

GADSDEN	46.0%	50.7%	51.0%	52.4%	48.1%	43.1%	45.9%	43.9%
GILCHRIST	64.1%	55.4%	66.5%	69.6%	76.8%	81.2%	85.4%	78.7%
GLADES	66.7%	51.0%	54.8%	54.7%	59.4%	54.8%	67.1%	63.4%
GULF	80.0%	83.0%	81.5%	83.8%	87.8%	93.8%	91.4%	83.8%
HAMILTON	54.3%	70.4%	59.5%	67.9%	61.5%	60.7%	65.7%	63.2%
HARDEE	65.0%	65.5%	57.6%	67.6%	62.0%	72.2%	66.3%	70.3%
HENDRY	66.7%	59.8%	50.5%	52.1%	63.9%	69.6%	69.3%	72.1%
HERNANDO	68.7%	67.4%	67.8%	74.0%	77.3%	79.5%	74.5%	74.1%
HIGHLANDS	70.0%	64.7%	68.6%	58.6%	66.9%	71.9%	72.8%	69.6%
HILLSBOROUGH	69.5%	71.4%	74.4%	77.5%	75.8%	79.3%	79.5%	77.3%
HOLMES	76.6%	73.5%	79.2%	79.8%	85.4%	79.6%	80.6%	71.3%
INDIAN RIVER	65.2%	64.9%	65.9%	78.9%	76.1%	82.1%	85.3%	84.7%
JACKSON	58.1%	49.8%	53.0%	59.6%	76.5%	77.1%	78.6%	87.8%
JEFFERSON	62.6%	65.3%	78.8%	64.5%	71.8%	64.9%	68.1%	53.5%
LAFAYETTE	80.6%	65.5%	58.0%	69.0%	79.5%	80.0%	79.4%	81.7%
LAKE	65.0%	66.3%	67.5%	68.7%	73.0%	72.1%	72.2%	70.1%
LEE	69.4%	67.8%	65.9%	66.0%	68.3%	70.7%	69.4%	71.5%
LEON	64.7%	67.3%	64.2%	74.3%	75.8%	79.8%	79.8%	76.2%
LEVY	61.2%	65.9%	55.7%	57.0%	63.5%	67.4%	64.8%	65.6%
LIBERTY	71.7%	72.7%	82.0%	77.5%	90.7%	89.8%	90.4%	89.7%
MADISON	67.5%	56.3%	68.4%	63.8%	68.0%	68.7%	63.0%	58.5%
MANATEE	56.2%	61.4%	65.2%	68.9%	73.8%	75.3%	81.5%	76.9%
MARION	57.9%	60.3%	65.2%	69.1%	70.6%	73.1%	72.3%	71.8%
MARTIN	60.6%	83.3%	85.4%	84.4%	85.1%	86.8%	84.9%	93.2%
MONROE	71.0%	72.0%	68.5%	74.2%	73.9%	75.2%	76.7%	75.5%
NASSAU	73.7%	67.9%	55.1%	76.7%	79.5%	81.1%	85.2%	81.8%
OKALOOSA	77.1%	77.5%	76.8%	83.7%	83.7%	82.9%	85.2%	86.0%
OKEECHOBEE	62.7%	64.3%	63.6%	67.6%	67.3%	60.5%	62.5%	62.8%
ORANGE	51.3%	49.5%	59.8%	68.3%	68.5%	72.7%	73.8%	72.2%
OSCEOLA	55.7%	58.9%	58.4%	66.1%	66.7%	64.6%	67.7%	64.5%
PALM BEACH	58.2%	63.6%	64.9%	66.6%	66.0%	65.9%	69.0%	69.3%
PASCO	63.5%	64.8%	65.9%	71.7%	74.9%	75.9%	76.5%	74.4%
PINELLAS	65.3%	64.3%	64.4%	66.4%	69.0%	70.8%	70.1%	67.0%
POLK	53.3%	55.3%	52.6%	66.9%	65.7%	71.6%	70.5%	68.8%
PUTNAM	65.8%	61.2%	62.9%	71.1%	79.5%	80.2%	78.1%	76.4%
ST. JOHNS	72.0%	74.9%	77.1%	76.1%	78.2%	78.3%	76.8%	76.7%
ST. LUCIE	63.5%	62.9%	69.6%	77.0%	76.8%	79.5%	73.6%	72.7%
SANTA ROSA	75.4%	73.5%	75.4%	85.5%	83.3%	84.8%	84.5%	85.5%
SARASOTA	63.0%	63.4%	70.3%	71.8%	76.4%	77.8%	81.7%	79.9%
SEMINOLE	63.3%	67.0%	70.9%	77.8%	81.4%	84.0%	81.3%	83.4%
SUMTER	71.4%	74.8%	73.1%	72.1%	79.8%	81.2%	75.7%	76.3%
SUWANNEE	60.6%	57.7%	60.7%	71.2%	72.3%	69.1%	62.0%	65.1%
TAYLOR	61.4%	55.1%	58.2%	68.7%	71.2%	74.1%	78.7%	78.3%
UNION	61.0%	58.8%	63.2%	78.4%	67.1%	79.2%	84.1%	76.7%
VOLUSIA	70.1%	74.9%	77.0%	81.5%	80.1%	83.0%	83.0%	81.9%
WAKULLA	76.2%	73.7%	72.5%	81.2%	83.6%	84.7%	85.5%	77.6%

WALTON	68.9%	75.4%	72.1%	69.9%	71.3%	75.2%	77.8%	76.1%
WASHINGTON	65.9%	69.0%	70.5%	70.1%	66.8%	70.8%	68.5%	69.8%
STATE	60.2%	62.3%	63.8%	67.9%	69.0%	71.6%	71.9%	71.0%

Florida Public High School Dropout Rates, 1998-1999 through 2005-2006

District	1998-99	1999-00	2000-01	2001-02	2002-03	2003-04	2004-05	2005-06
ALACHUA	5.7%	6.3%	6.1%	5.2%	5.1%	5.1%	5.0%	6.1%
BAKER	9.7%	3.0%	4.2%	3.5%	3.7%	4.0%	4.3%	3.7%
BAY	2.5%	3.5%	1.6%	1.5%	1.1%	1.8%	1.2%	2.0%
BRADFORD	3.2%	2.4%	5.0%	3.6%	3.9%	5.8%	4.5%	5.4%
BREVARD	3.5%	2.0%	2.4%	0.8%	0.7%	0.6%	1.2%	0.8%
BROWARD	2.8%	2.3%	1.6%	1.3%	1.0%	1.1%	1.7%	2.7%
CALHOUN	1.8%	2.3%	3.1%	3.0%	2.0%	2.5%	1.4%	3.0%
CHARLOTTE	3.2%	3.7%	3.5%	3.7%	4.5%	2.1%	2.2%	2.5%
CITRUS	7.9%	4.6%	3.2%	4.3%	4.0%	3.5%	4.4%	4.7%
CLAY	2.8%	3.2%	2.7%	2.5%	2.2%	1.9%	1.9%	1.9%
COLLIER	5.8%	5.6%	4.2%	3.7%	3.6%	3.1%	2.2%	2.0%
COLUMBIA	4.9%	2.0%	1.8%	1.4%	1.3%	1.6%	2.1%	2.1%
DADE	10.6%	8.0%	5.4%	4.4%	4.2%	4.6%	4.5%	6.7%
DESOTO	5.4%	3.9%	3.5%	2.7%	2.7%	3.1%	5.6%	6.1%
DIXIE	3.5%	3.2%	2.7%	3.3%	4.2%	2.8%	2.8%	5.6%
DUVAL	8.6%	8.5%	8.3%	5.7%	4.6%	5.1%	5.9%	6.6%
ESCAMBIA	2.6%	3.0%	2.4%	2.3%	2.5%	2.4%	3.4%	3.1%
FLAGLER	1.8%	2.0%	2.0%	2.0%	0.8%	3.6%	1.4%	1.9%
FRANKLIN	3.9%	6.9%	4.1%	2.6%	4.0%	8.0%	4.6%	13.3%
GADSDEN	7.1%	7.0%	6.7%	4.4%	4.4%	5.3%	6.0%	4.9%
GILCHRIST	3.1%	3.4%	3.4%	2.6%	3.1%	2.3%	2.1%	2.3%
GLADES	9.3%	10.9%	6.3%	7.2%	7.3%	4.4%	8.2%	6.9%
GULF	1.6%	2.6%	1.5%	0.6%	1.4%	2.3%	2.2%	2.9%
HAMILTON	4.0%	3.7%	2.3%	2.3%	4.6%	7.6%	4.9%	5.4%
HARDEE	8.8%	5.6%	7.2%	6.6%	6.3%	5.8%	6.3%	5.7%
HENDRY	7.4%	7.1%	5.7%	4.9%	4.1%	3.4%	3.6%	4.2%
HERNANDO	6.1%	2.9%	2.0%	2.1%	1.9%	3.2%	3.1%	4.9%
HIGHLANDS	4.2%	5.9%	5.8%	4.3%	4.4%	2.6%	5.0%	5.7%
HILLSBOROUGH	4.2%	2.6%	2.7%	2.2%	2.6%	1.9%	2.1%	2.1%
HOLMES	4.0%	2.3%	2.9%	2.6%	3.4%	4.8%	2.3%	3.8%
INDIAN RIVER	4.9%	4.0%	2.4%	1.6%	2.0%	1.3%	1.4%	1.0%
JACKSON	0.9%	1.8%	1.5%	2.3%	2.4%	2.7%	2.8%	1.2%
JEFFERSON	2.7%	3.6%	3.1%	3.6%	4.2%	4.0%	8.0%	7.7%
LAFAYETTE	6.0%	5.3%	0.9%	4.5%	2.3%	1.7%	2.6%	2.8%
LAKE	3.6%	4.3%	4.5%	4.9%	4.0%	4.5%	4.5%	4.7%
LEE	4.9%	4.6%	5.6%	7.0%	5.9%	2.9%	2.9%	3.5%
LEON	4.0%	3.5%	3.1%	3.4%	2.7%	3.1%	1.9%	2.3%
LEVY	3.6%	5.0%	3.7%	3.1%	4.0%	4.3%	5.0%	4.8%

LIBERTY	5.9%	1.9%	0.6%	0.5%	0.6%	0.9%	0.2%	0.9%
MADISON	5.2%	5.0%	5.4%	5.4%	1.6%	3.5%	7.8%	5.5%
MANATEE	7.4%	6.3%	4.5%	3.0%	1.8%	2.6%	2.5%	3.1%
MARION	5.7%	4.5%	3.6%	2.8%	3.0%	3.3%	3.6%	4.2%
MARTIN	0.0%	0.6%	0.5%	0.5%	0.8%	0.6%	1.3%	0.4%
MONROE	4.7%	1.8%	3.0%	3.7%	3.7%	4.1%	4.0%	1.5%
NASSAU	3.2%	3.9%	4.9%	3.3%	2.7%	2.5%	3.1%	3.4%
OKALOOSA	4.4%	4.1%	3.7%	3.0%	3.4%	2.1%	2.5%	2.2%
OKEECHOBEE	6.6%	5.4%	5.1%	4.6%	5.4%	4.7%	7.2%	6.0%
ORANGE	5.7%	6.8%	4.9%	2.8%	4.4%	2.5%	2.0%	1.9%
OSCEOLA	6.1%	5.5%	4.2%	4.6%	3.3%	3.9%	4.1%	4.1%
PALM BEACH	3.8%	3.2%	2.5%	2.6%	2.6%	2.6%	2.8%	3.0%
PASCO	5.5%	4.4%	4.3%	3.4%	3.3%	3.5%	4.2%	4.2%
PINELLAS	3.7%	3.1%	4.2%	5.2%	4.5%	3.6%	2.7%	3.0%
POLK	8.7%	5.9%	5.8%	2.9%	3.6%	3.6%	4.8%	4.4%
PUTNAM	3.7%	3.8%	2.4%	2.2%	1.5%	3.1%	4.2%	4.0%
ST. JOHNS	2.5%	2.3%	2.4%	2.1%	2.0%	2.3%	1.7%	2.0%
ST. LUCIE	4.7%	4.5%	1.6%	1.3%	1.6%	2.6%	2.3%	2.2%
SANTA ROSA	2.1%	2.0%	2.2%	1.8%	2.1%	2.3%	1.8%	2.3%
SARASOTA	7.6%	3.6%	3.1%	3.1%	3.5%	2.9%	2.9%	2.5%
SEMINOLE	2.1%	3.4%	1.0%	1.3%	1.4%	1.2%	1.3%	1.2%
SUMTER	3.6%	3.9%	3.9%	2.5%	3.4%	3.1%	3.1%	2.6%
SUWANNEE	3.4%	4.2%	5.3%	3.0%	4.4%	8.5%	5.2%	4.8%
TAYLOR	3.6%	4.4%	1.8%	2.6%	4.2%	4.6%	3.2%	3.5%
UNION	1.7%	3.4%	3.5%	1.8%	2.4%	1.4%	2.1%	2.6%
VOLUSIA	1.8%	1.6%	1.4%	1.5%	1.4%	1.3%	1.1%	1.4%
WAKULLA	4.4%	2.7%	2.5%	5.1%	2.8%	2.9%	2.7%	5.7%
WALTON	5.3%	4.9%	4.5%	4.9%	2.5%	3.1%	2.8%	2.6%
WASHINGTON	2.9%	2.3%	2.7%	2.6%	1.8%	2.0%	2.4%	3.4%
STATE	5.4%	4.6%	3.8%	3.2%	3.1%	2.9%	3.0%	3.5%